

CRACK PRO® HEATED HOSE MACHINES

OIL-JACKETED MELTER/APPLICATORS FOR HOT POUR CRACK SEALING MATERIALS

ALL DIESEL POWER FOR MAXIMUM EFFICIENCY!

Both the burner and the engine are powered by diesel fuel for maximum safety, efficiency, and performance.

Crack Pro Heated Hose Machine Features:

- State-of-the-art heated hose maintains material temperature throughout the application process and includes a light-weight aluminum wand with a crack sealing square for ease of application
- Industry's fastest heat-up and recovery, (ready to apply product within 1 hour).
- The waterproof steel control cabinet houses all safety interlocks, operations and monitoring of the heating systems (*hose, material, heat transfer oil*), agitation, pump and audible horn for directional control.
- Anti-splash material loading hatch for safer loading
- Insulated with 1.5" ceramic, covered by a 14-gauge steel outer body
- Electro-hydraulic manifold with flow control for pump and mixer speeds
- Liquid cooled Kubota diesel engine
- Diesel fired Beckett Burners are electronically controlled with auto shut off, and side mounted for easy maintenance
- Horn button on wand notifies driver to move ahead or back
- Direct-drive FWD/REV full sweep agitation

TR 125 & 260 DA Model Features:

- Direct drive air compressor with 100' x 5/8" reeled hose & wand
- V1505 Kubota diesel engine (brand subject to change)

PRODUCT #	DESCRIPTION	WEIGHT
E2745HH	TR 125 D	3,700 lbs.
E2747HH	TR 125 DA	4,000 lbs.
E2755HH	TR 260 D	5,000 lbs.
E2765HH	TR 260 DA	5,300 lbs.
E2755DPH	TR 260 Double Pump	5,300 lbs.
E2770DPH	TR 400 Double Pump	6,180 lbs.
P74001	Upgrade to a 23' hose	

Available Options on Page 69

* Call for pricing | Components subject to change

ALSO AVAILABLE...



TR 260 Double Pump now available!

SPECIFICATIONS:

Tank Capacity125, 260, 400 gallons
Heat Transfer Oil 25, 30, 45 gallon capacity
Maximum BTU Input 372,000 BTU
Construction Oil jacket type tank
Temperature Control Automatic Electronic
Tank Opening16" x 24" no splash material loading
Insulation1 1/2" High Temperature Ceramic
Agitation Full Sweep, Hydraulically Driven, Forward / Reverse
Material Pump 2" Steel Gear, Reversible
Heating System Bottom fired forced air diesel fuel
Suspension Torsion type axle with 5 lug tubeless tire
Application Hose 3/4" x 19' electric hose (23' available)
Heated Hose Eliminates need to flush out hose for cleanup

	CP 125	CP 260	CP 400
Loading Height	54"	48"	63"
Overall Height	80"	90"	103"
Width	78"	93"	94"
Length	192"	206"	206"
Empty Weight	3,700 lbs.	5,000 lbs.	6,180 lbs.
Empty Weight with conveyor	4,200 lbs.	5,500 lbs.	-
Height with conveyor	8' 6"	8' 6"	-

STANDARD FEATURES ON ALL "D" AND "DA" MODELS:



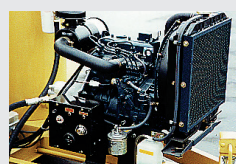
Digital Control Center with protective steel cover



Anti-Splash Material Loading Hatch



Electro-hydraulic manifold



Liquid Cooled Kubota Diesel Engine



Horn button on wand



Diesel fired Beckett Burner



Direct-Drive FWD/REV Full Sweep Agitation

STANDARD FEATURES ON ALL "DA" MODELS:



Direct Drive Air Compressor



100' x 5/8" Reeled Hose & Wand



V1505 Kubota Diesel Engine

CP-125 HEATED HOSE MACHINE



CP-260 HEATED HOSE MACHINE



Ergonomic counter balanced hose boom

CRACK PRO® MELTER / APPLICATOR OPTIONS



Arrowboard

State-of-the-art material conveyor for optimum safety and convenience



PRODUCT #	DESCRIPTION
<i>Options:</i>	
PE2710	Material Block Conveyor
E2680	Hydraulic surge brake assembly
P553A008	2 5/16" ball hitch
PE2680	Arrowboard
P447C001	Fire extinguisher - 20 lbs. with accessories
P74000B231	Engine Security Cover- Crack Pro HH Non-Air Models
P74000D231	Engine Security Cover - Crack Pro HH Air Models
P74000B004	Tool box
P74002	LP tank stand
P74000B301	Spare Tire Mount
P514A017	15" Spare Tire Assembly
P470A003	2" application swivel disc
P470A002	3" application swivel disc
P470A007	5" application swivel disc
PE2685	Strobe / Beacon Light
P50347	Overnight Heater Kit - Single
P50348	Overnight Heater Kit - Double