



Shown with water option



SP 575 DUAL SPRAY / SQUEEGEE MACHINE

A 575-GALLON CAPACITY MACHINE THAT DOES IT ALL - SPRAY BAR, SPRAY WAND, AND SQUEEGEE APPLICATION

DESIGNED TO MIX AND APPLY PAVEMENT SEALERS WITH OR WITHOUT SAND

SP 575 DUAL Features:

- Round tank design with true, full-sweep agitation and rubber wiper blades
- SandPumper II 2" material pump. Shifts to neutral when wand or spray bar is shut off
- Quick change floating squeegee assembly with rear-angling squeegee [windrow feature] and front box squeegee
- All wheel drive for added traction and easier trailer loading
- Spray bar, spray wand
- Power steering for ease of maneuvering
- Easy-open, butterfly sealer discharge valves
- Emergency brake

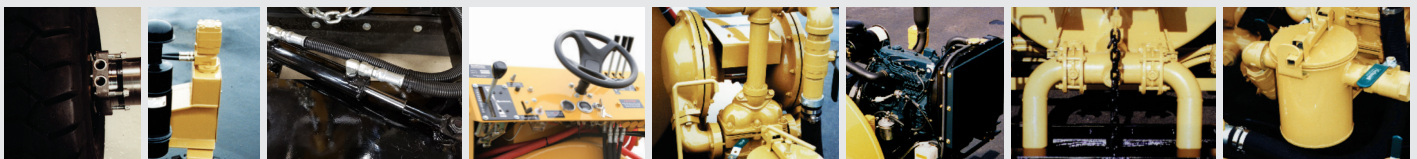
SPECIFICATIONS:

Height	74"
Width	65"
Length	168"
Wheel Base	60"
Squeegee width	93"
Weight	4,760 lbs.
Material Tank Capacity	575 gallons
Water Tank Capacity Option	28 gallons
Engine	49 HP Kubota gasoline (brand subject to change)

PRODUCT #	DESCRIPTION	WEIGHT
E1005	SP 575 Dual	4,760 lbs.
E9100	Blocking / Bracing Charge (if required)	300 lbs.
Options:		
P50402	28 Gallon Water System	
P50246D	Hydraulically Activated Spray Bar	

* Call for pricing | Components subject to change

STANDARD FEATURES:



Rear Wheel Direct-Drive

Power Steering

Hydraulic Shift for Angling the Squeegee

User-Friendly Control Panel

Hydraulically Driven Dual Diaphragm Material Pump

Gasoline Engine Standard

Dual Easy-Open Butterfly Sealer Discharge Valves

1-Gallon Basket Strainer Reduces Tip Clogging